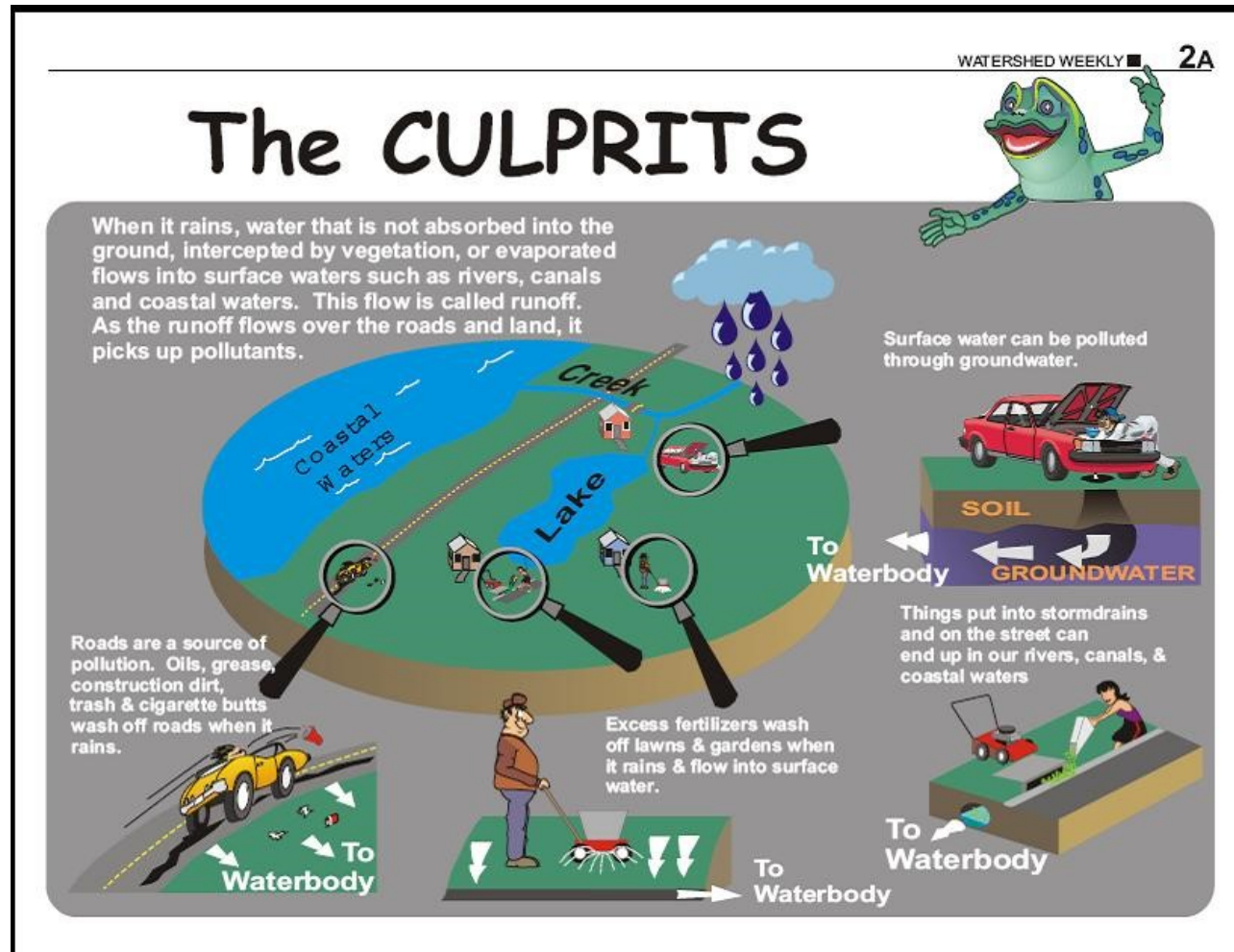


Stormwater Pollution Causes



When it rains, water that is not absorbed into the ground, intercepted by vegetation, or evaporated flows into surface waters such as rivers, canals and coastal waters. This flow is called runoff. As the runoff flows over the road and land, it picks up pollutants.

Stormwater Pollution Causes

Surface water can be polluted through groundwater. *Soil to groundwater to waterbody.*

Things put into stormdrains and on the street can end up in our rivers, canals, & coastal waters. *Soil to groundwater to waterbody.*

Excess fertilizers wash off lawns & gardens when it rains & flow into surface water. *Soil to groundwater to waterbody.*

Roads are a source of pollution. Oils, grease, construction dirt, trash and cigarette butts wash off roads when it rains. *Road to soil to groundwater to waterbody.*