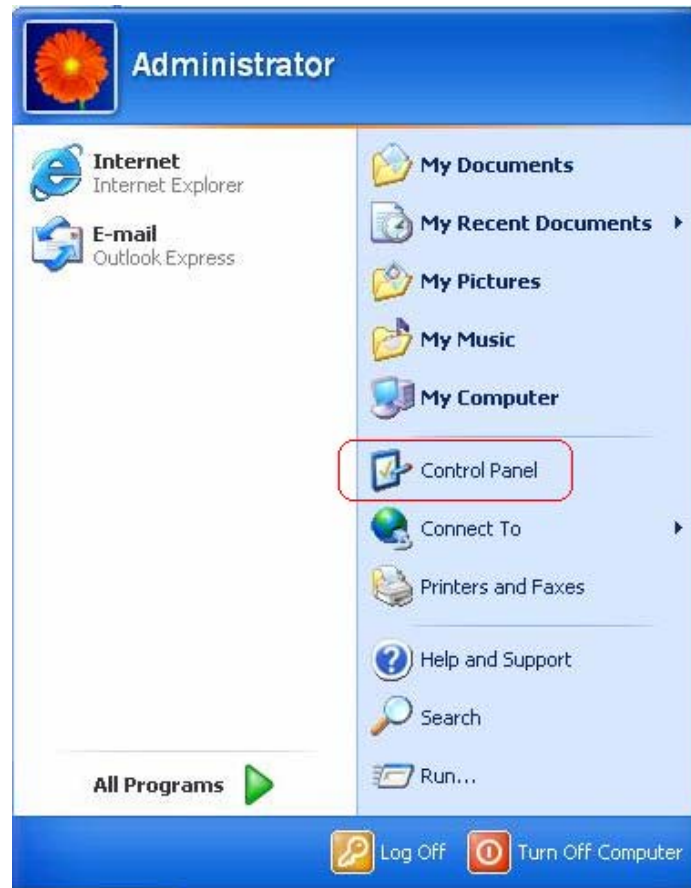


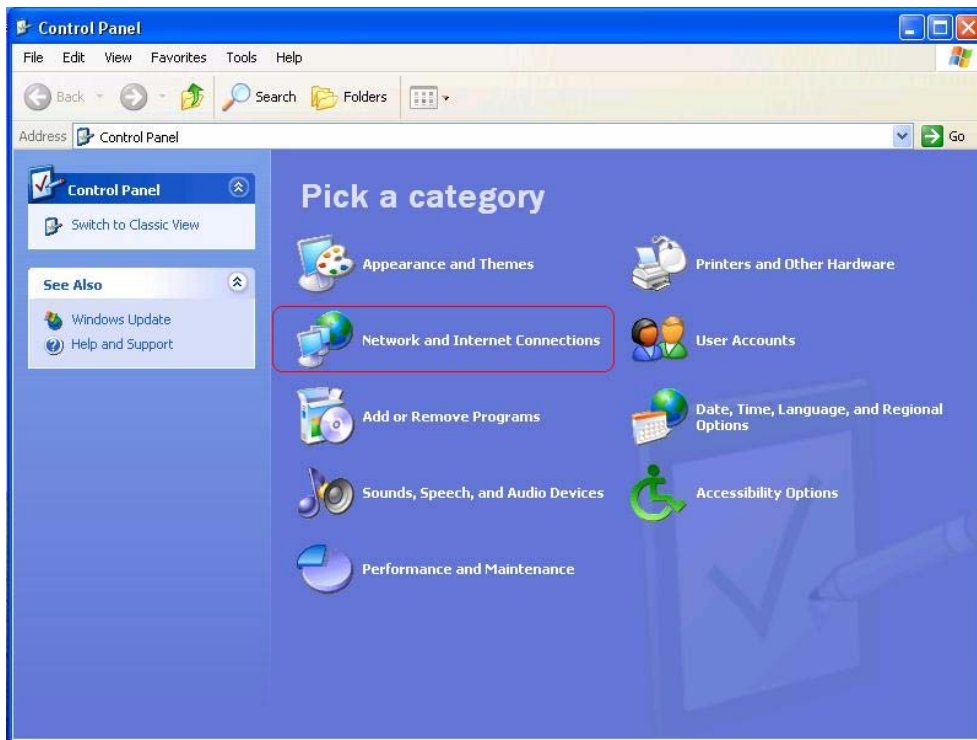
DETERMINING IF A LAPTOP HAS A WIRELESS ETHERNET CARD

You can use the following instructions to determine if your laptop has a Wireless Ethernet card. These instructions were written for Windows XP Professional and will differ depending on the installed operating system.

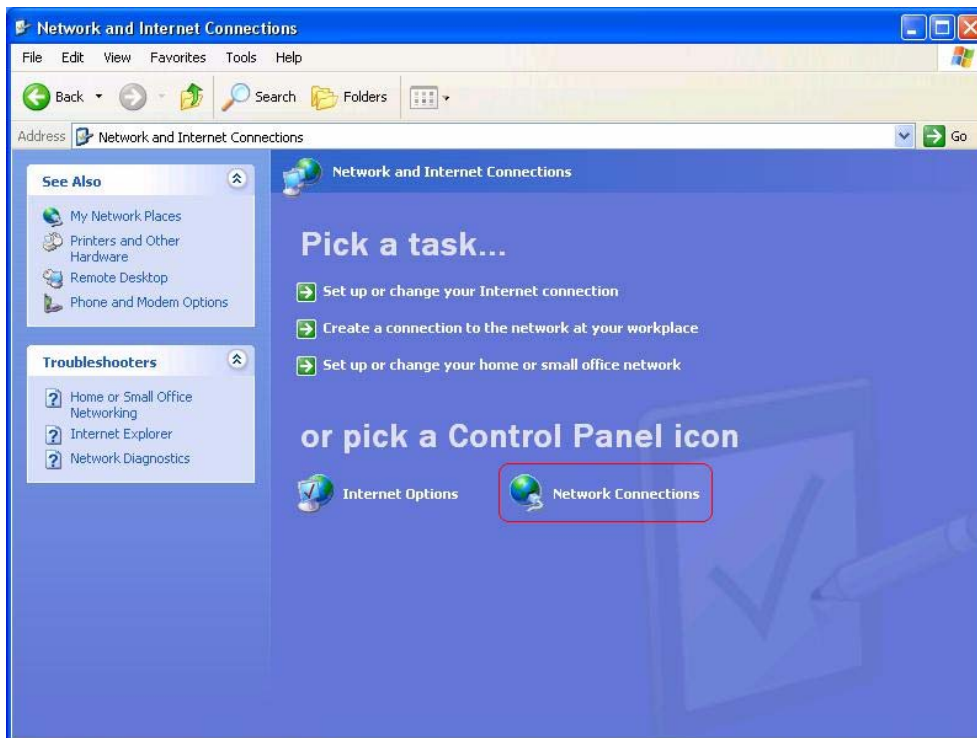
Launch control panel by going to **Start >>Control Panel**.



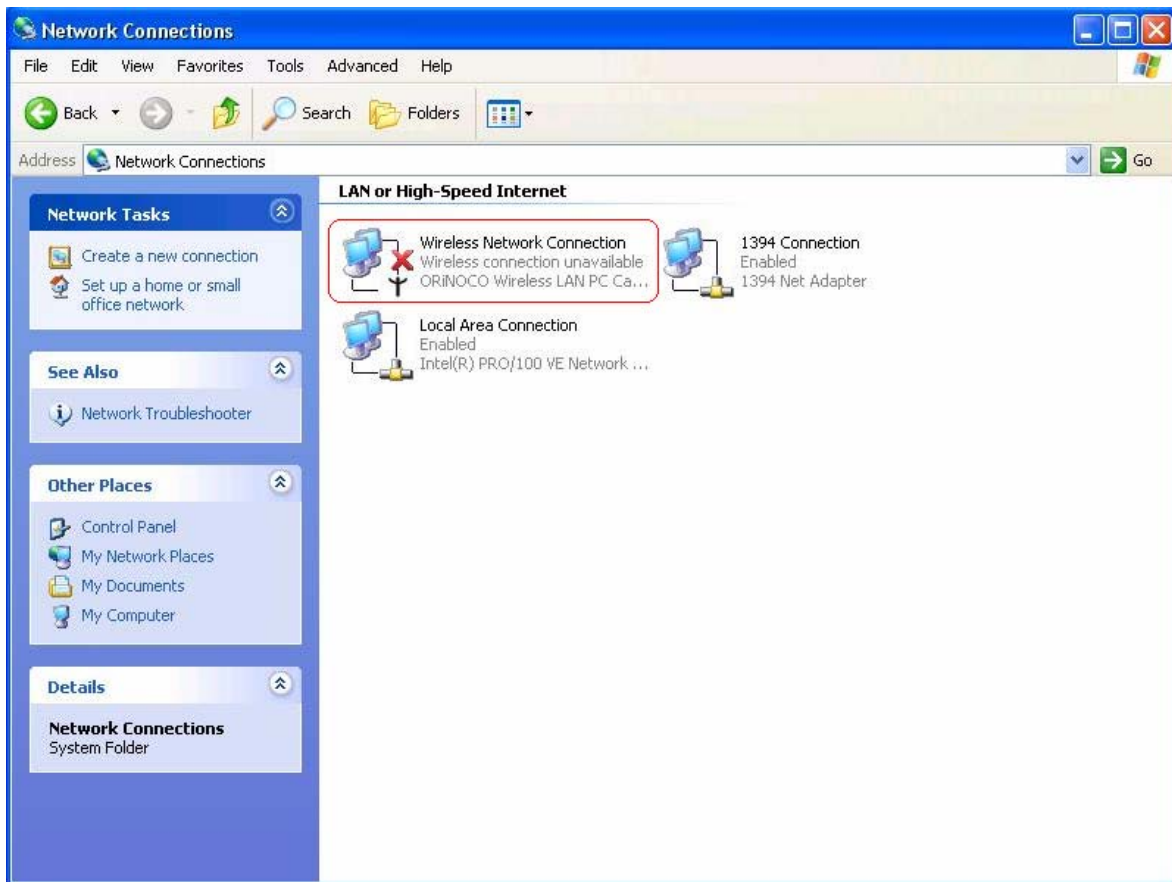
In the Control Panel click on **Network and Internet connection**:



Select **Network connection**:



On the next screen make sure that you have an icon with **Wireless Network Connection** label as shown below.



If you have an icon that say's **Wireless Network Connection** then you probably have a working Wireless Ethernet card. If you do not have an icon that says **Wireless Network Connection** but you believe your laptop is equipped with a Wireless Ethernet card then go through your laptop manuals or contact the laptop's manufacturer and/or vendor's technical support department to determine how to activate it.

If after doing everything listed above you still have questions, please call the NSU helpdesk at 823-8678 for assistance. We encourage that you try the above activation steps prior to calling the Helpdesk so staff can assist as many users as possible.